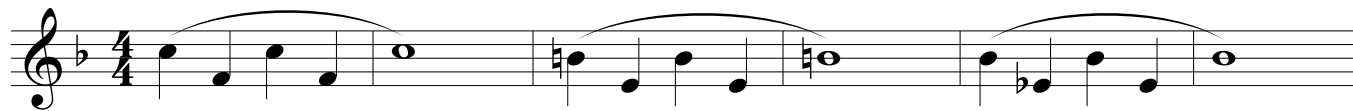


Horn in F

# Lip Slurs and Range Studies

①



T0

T2

T1



T12

T23



0

2

②



T0

T2

T1



T12

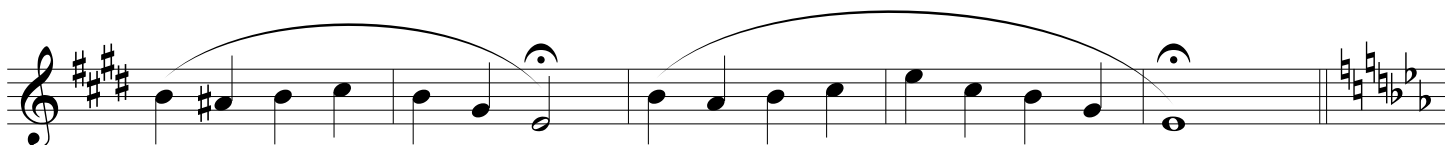
T23



0

2

③



Lip Slurs and Range Studies  
Horn

Four staves of musical notation for lip slurs and range studies. Each staff contains two phrases of music, each phrase consisting of a sequence of notes slurred together and ending with a fermata. The first staff is in B-flat major, the second in D major, the third in B-flat major, and the fourth in B-flat major.

4

Five staves of musical notation for lip slurs and range studies, each with fingerings indicated below the notes. The first staff is in B-flat major, the second in B-flat major, the third in B-flat major, the fourth in B-flat major, and the fifth in B-flat major.

23 2 0 1      12 0 1 2

2 23 2 0      2 1 0 T23

0 2 T23 T12      12 0 T12 T2

1 1 T1 T2      12 2 T2 T0

0 0 T0 T12      1 T23 T23 T12