

Lip Slurs and Range Studies

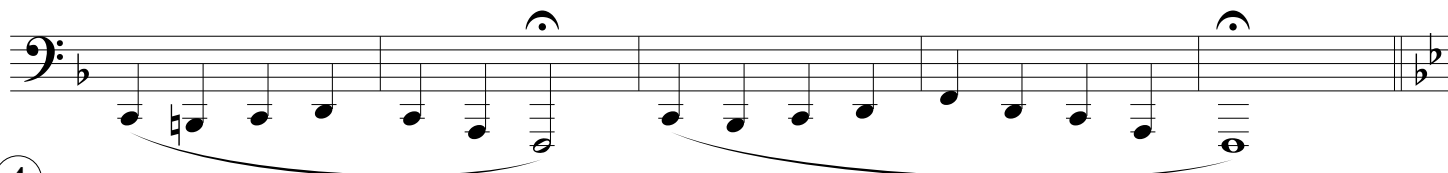
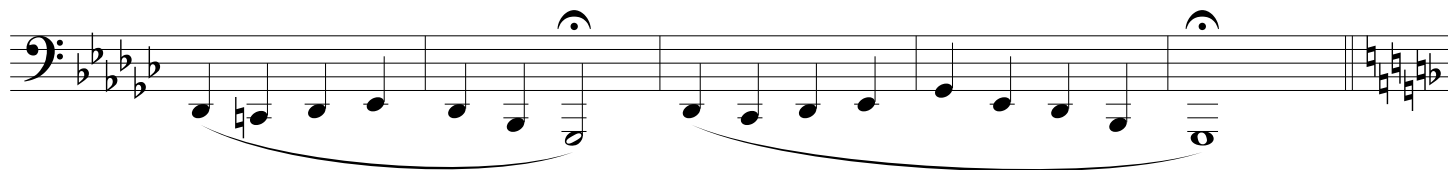
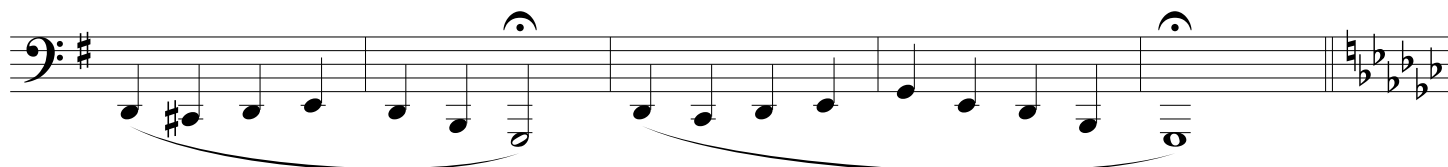
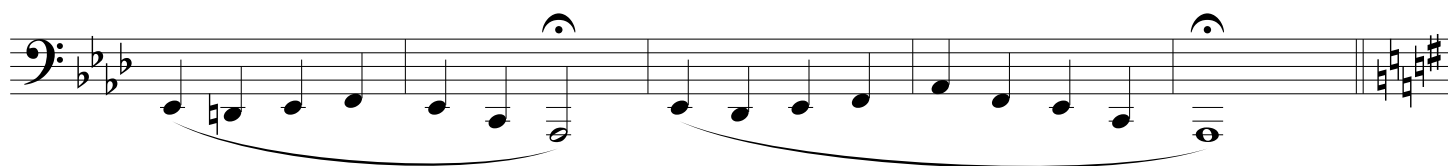
1

2

3

The bass line is written on a single staff with a bass clef and a key signature of three sharps (F#, C#, G#). The melody consists of eighth and quarter notes, with some measures containing beamed eighth notes. The line ends with a double bar line and a repeat sign.

Lip Slurs and Range Studies
Tba



4

